

# Renewable Energy Coordination Committee



**WYOMING**

## OVERVIEW

Todd Parfitt  
Industrial Siting Administrator

January 31, 2012



# Renewable Energy Coordination Committee (RECC)



- What/Who Is RECC
  - BLM, DEQ/ISD, OSLI, WACC, Governor's Planning Office, WIA
    - Initial Meeting February 2011
  - WGF, USFWS, NPS
  - Foster Federal, State, and Local Coordination of Wind and Transmission Development
- Why?
  - Expanding Interest in Wind Energy Development
  - Seven (7) Proposed Transmission Lines
  - Overlapping Jurisdictions
  - New Statutes and Rules
  - Interest in Administering Efficient and Effective Programs
  - Interest in Sharing Information

# Wyoming Wind Energy



- **Common Issues:**
  - **Sage Grouse**
  - **Transmission**
  - **Reclamation and Decommissioning**
  - **Viewsheds**
  - **Road Maintenance**
  - **Traffic Patterns**
  - **Wildlife Migration**
  - **Bird and Bat Mortality**
  - **Cultural and Historical Preservation**
  - **Workforce Impacts**
    - **Housing**
    - **Local Government Services**



# Wind Energy Facilities Permitted by ISC

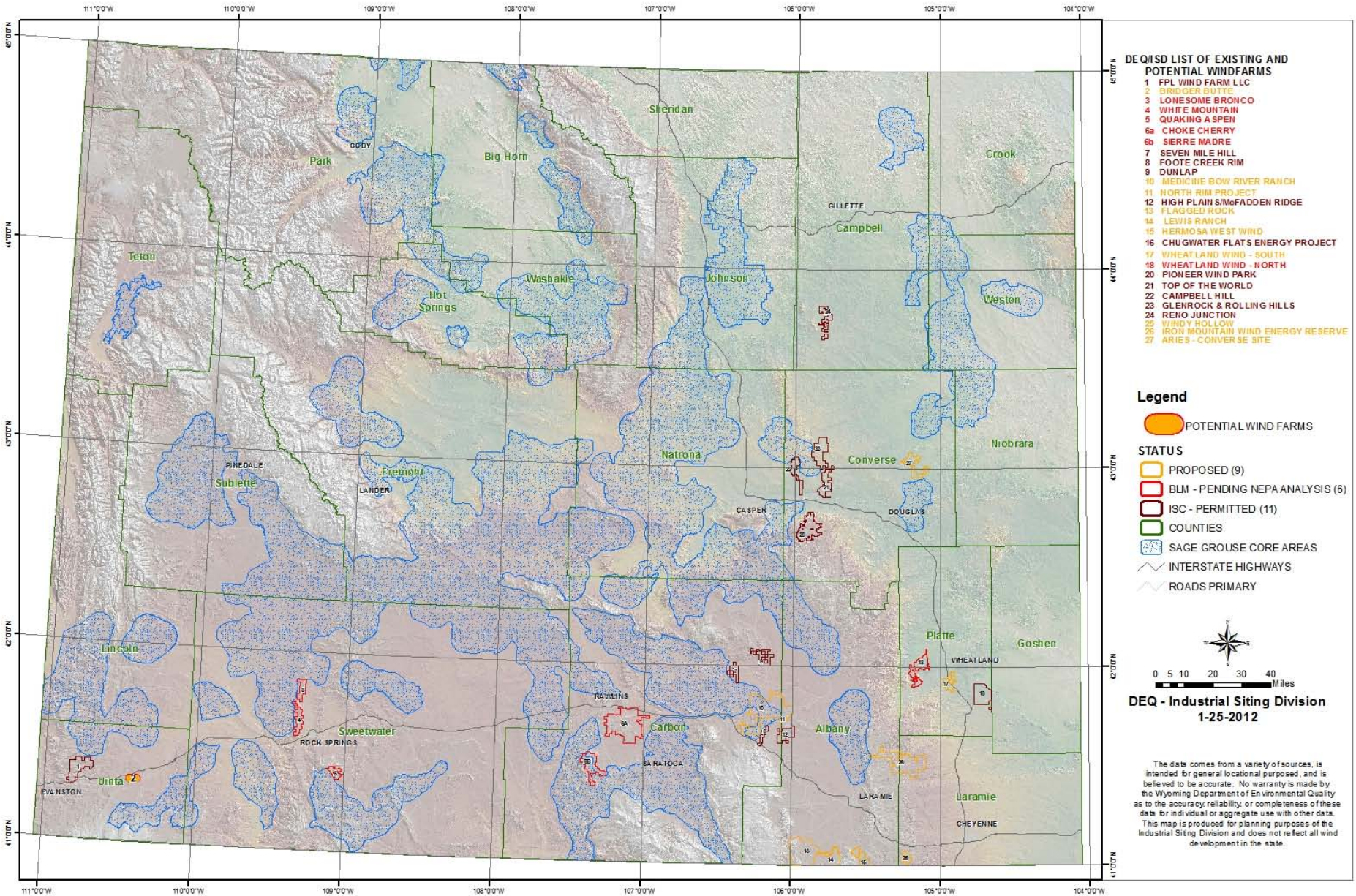


- Total Wind Energy Facilities Permitted – 11
  - First Facility – 1995 (Carbon County)
  - Second Facility – 2003 (Uinta County)
  - 3 Facilities in 2008 (Converse, Carbon and Albany County)
  - 2 Facilities in 2009 (Converse and Carbon County)
  - 3 Facilities in 2010 (Converse, Platte and Campbell County)
  - 1 Facility in 2011 (Converse)
  - 7 Facilities Projected for 2012/2013 (Albany, Carbon, Platte, Laramie, Sweetwater)
    - An Additional 23 Potential Wind Projects Being Tracked

## Wind Farm Projects Affecting Public Land in Wyoming

As of January 26, 2012

Project Name	Company	Total MW	Federal MW	Total Turbines	Fed Turbines	Fed Acres	BLM Project Manager	Status
Chokecherry/Sierra Madre	Power Company of Wyoming, LLC	2,500	1,250	1,000 2-3MW	500	110,328	Pam Murdock	NOA for Draft RMP amendment, Draft PEIS, and Segregation published in Federal Register July 22, 2011. Open Houses were held 8/22/11 in Rawlins and 8/23/11 in Saratoga, company is revising their POD for the preferred alternative. Comment period ended 10/19/11. Comments are being compiled and responded to. Draft of Final EIS is being developed. Target for FEIS: June 2012.
Sand Hills Ranch	Shell Wind Energy, Inc.	50	8	25 2 MW	4	4700	Pam Murdock	APP concurrence received from FWS. EA has been published for public comment, the comment period ended June 14, 2011. PM working on decision packet for Secretary's signature. FWS sent BLM a letter summarizing lack of communication and data from proponent. Decision packet will not be sent to WO until proponent has resolved avian issues with FWS.
White Mountain	Teton Wind, LLC	360	108	240 1.5 MW	72	4,398	Lorraine Keith	APP development is sited as a criteria for receiving a Notice to Proceed from FM. ABPP concurrence received, working out cost recovery for FWS to develop and implement an ABPP. NEPA/cultural/wildlife contractor staff are currently conducting bird surveys required by FWS for final data to complete ABPP. DR/FONSI packet sent to Secretary for signature. Deputy Secretary has tabled signature until ABPP is complete. Target Spring 2012



# Outcomes

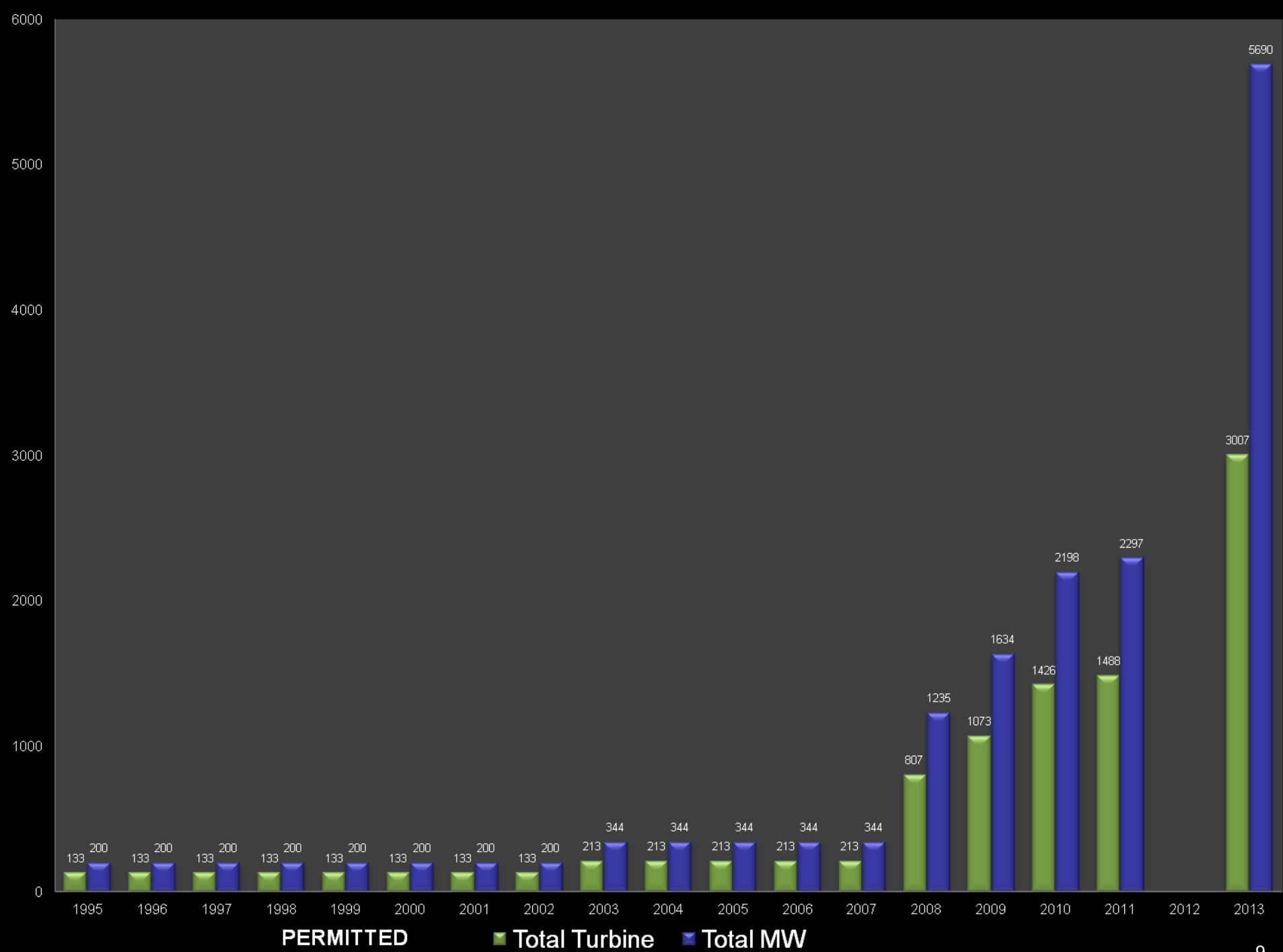


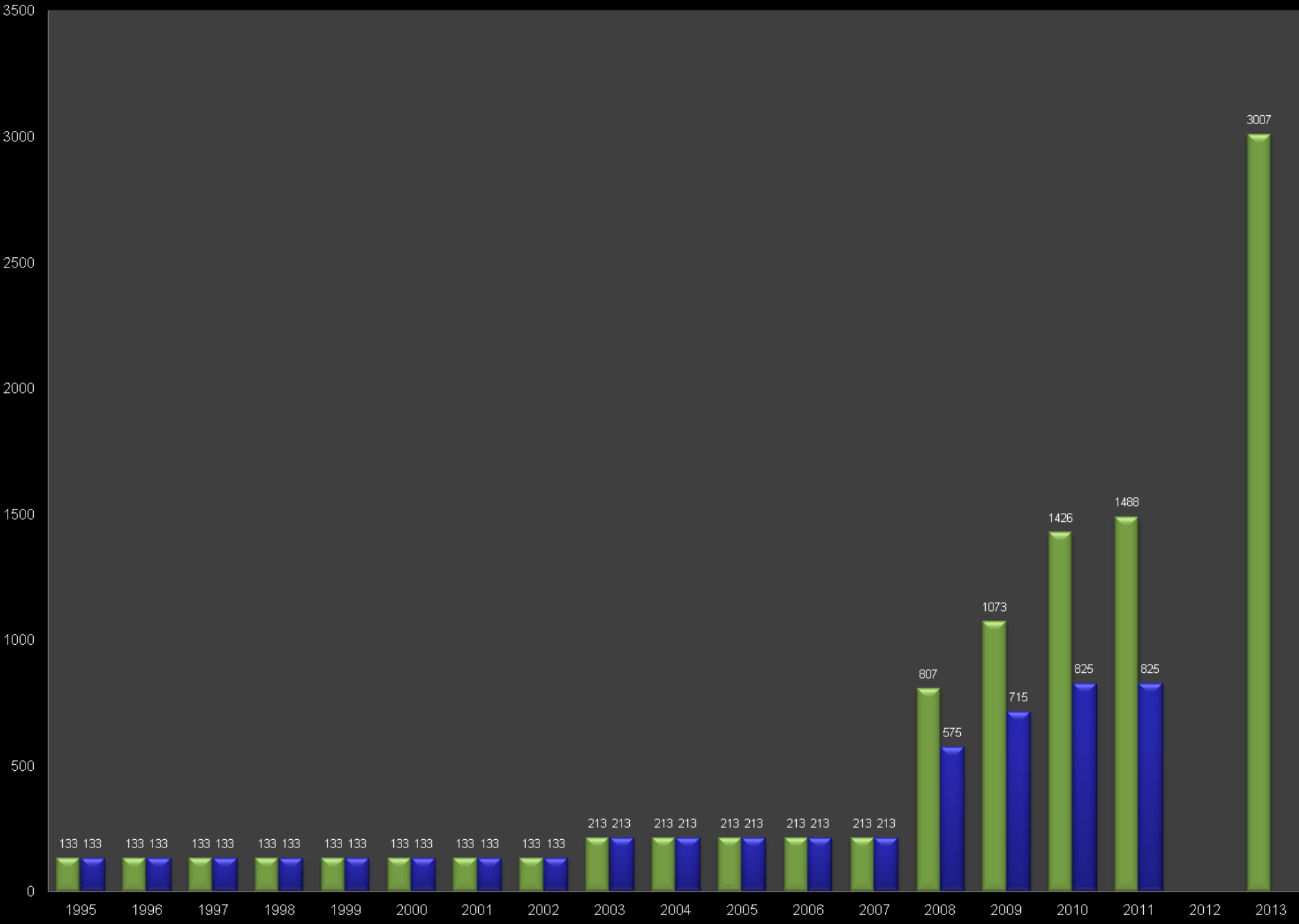
- Standardized Format for Sharing Information
- Forum That Brings Regulatory and Oversight Agencies Together
  - Identify Priorities
  - Identify Overlapping Jurisdictions
  - Identify Concerns
  - Optimize Use of Resources
- Updates from WWATS Study
- Regulatory Roadmap for Transmission

# TURBINES PERMITTED BY ISC VS. TURBINES CONSTRUCTED



Year Permitted	Permitted (Cumulative)	Constructed (Cumulative)
1995	133	133
2003	213	213
2008	807	575
2009	1073	715
2010	1426	825
2011	1488	825 (55%)
2012		
2013	3007	





**TURBINES** ■ Permitted ■ Constructed

# Questions/Discussion

