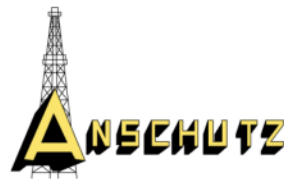




Advancing the TransWest Express Transmission Project



WIA Winter Board Meeting
Jackson, Wyoming
January 31, 2012

The Anschutz Corporation

- Over 75 years in business
- Privately held, based in Denver
- Diversified with worldwide investments
 - Energy exploration, production, delivery
 - Telecommunications, transportation
 - Real estate, ranching, agriculture
 - Lodging, sports, entertainment, film production, movie theaters
 - Newspaper and Internet publishing
 - Global investments and trading



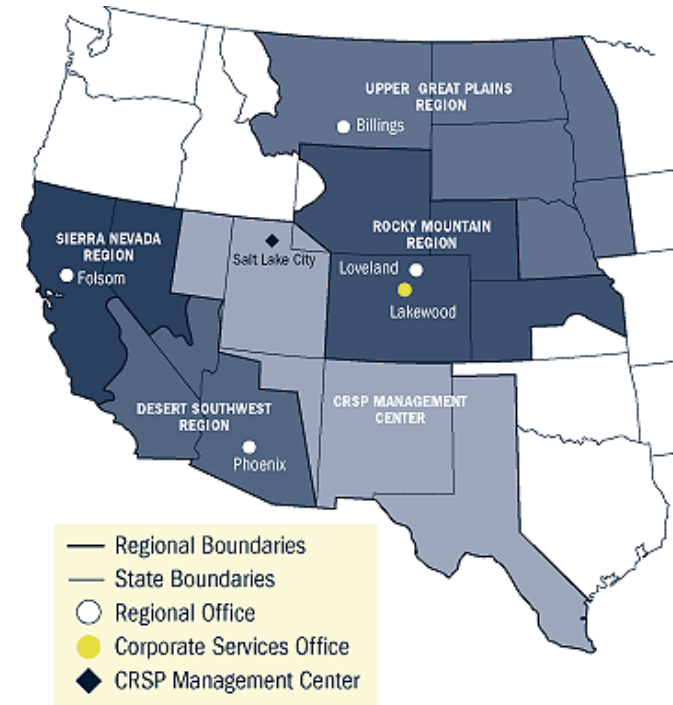
Western Joins TWE Project Development

- Western received \$3.25 billion in borrowing authority under ARRA for transmission to facilitate the delivery of renewable energy
 - Developed a Transmission Infrastructure Program to implement its mission
- Western and TransWest entered into a joint development agreement in September 2011
- Western may become 50% owner in the TWE Project
 - Western's decision on ownership will be made after environmental analysis is complete
- Western is joint lead with BLM to prepare the EIS



Western Area Power Administration

- Markets and delivers reliable, cost-based hydroelectric power from BOR facilities and related services
- Transmission system carries electricity from 57 power plants (including Hoover Dam) with installed capacity of 10,500 MW
- More than 17,000 miles of transmission in 15 central and western states



Update on TWE Project Progress



TWE Project Description

- 3,000 MW capacity
- 600 kV HVDC
- About 726 miles
- 2 ½-3-year construction
- 2016 in-service date
- Capable of delivering bulk supplies of renewable energy from various Wyoming wind projects
- Enough electricity to serve 1.8+ million households

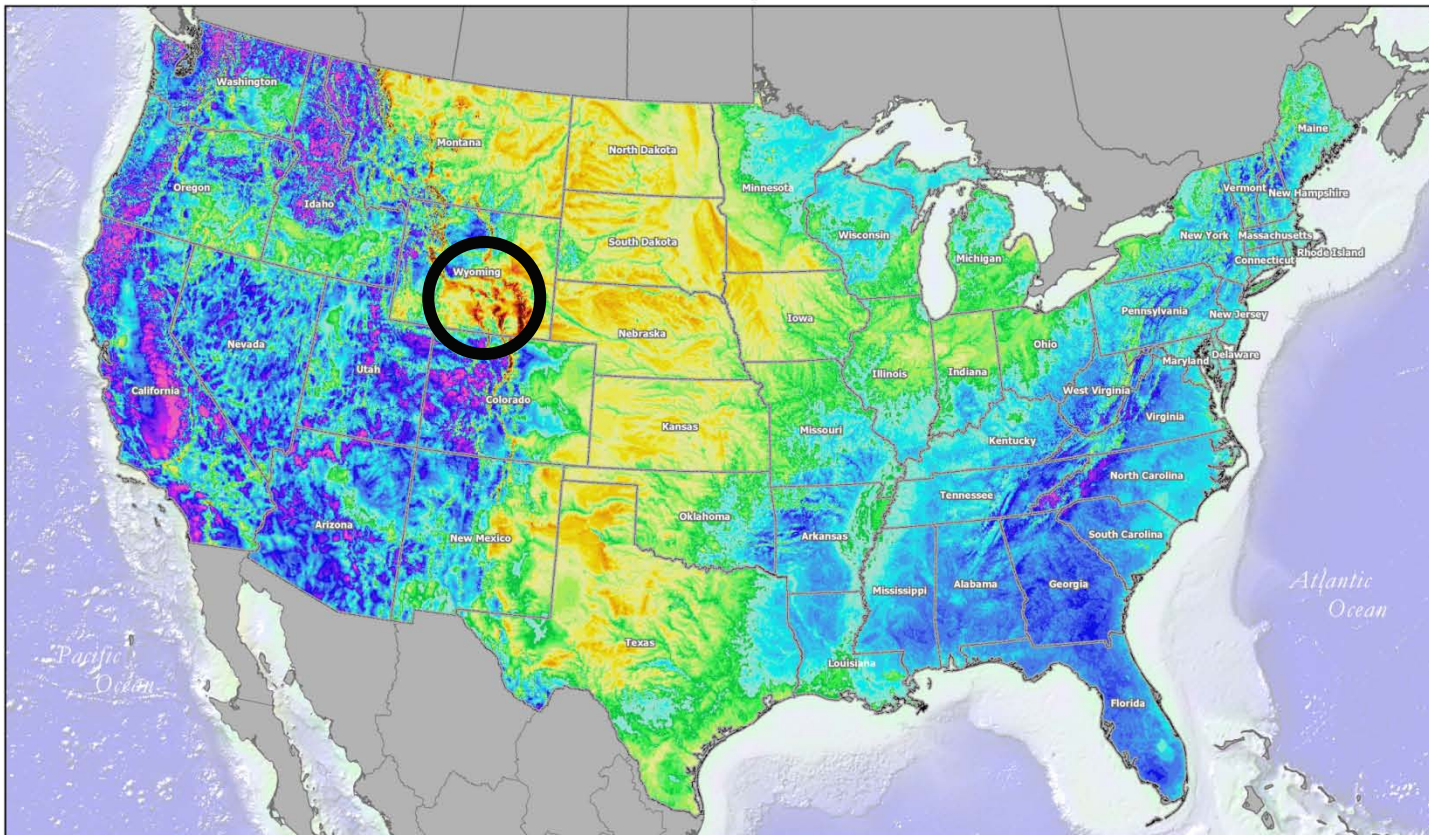


TWE Project

Connects Supply with Demand

Wyoming Has Best Wind in the West

WIND RESOURCE OF THE UNITED STATES
Mean Annual Wind Speed at 80 Meters



windNAVIGATOR™
Chart Your Course

Inset

Legend

Mean Annual Wind Speed at 80m m/s	
< 3.00	6.50 - 6.75
3.00 - 3.25	6.75 - 7.00
3.25 - 3.50	7.00 - 7.25
3.50 - 3.75	7.25 - 7.50
3.75 - 4.00	7.50 - 7.75
4.00 - 4.25	7.75 - 8.00
4.25 - 4.50	8.00 - 8.25
4.50 - 4.75	8.25 - 8.50
4.75 - 5.00	8.50 - 8.75
5.00 - 5.25	8.75 - 9.00
5.25 - 5.50	9.00 - 9.25
5.50 - 5.75	9.25 - 9.50
5.75 - 6.00	9.50 - 9.75
6.00 - 6.25	9.75 - 10.00
6.25 - 6.50	> 10.00

Reference

0 50 100 200 300 400 Kilometers
0 50 100 200 300 400 Miles

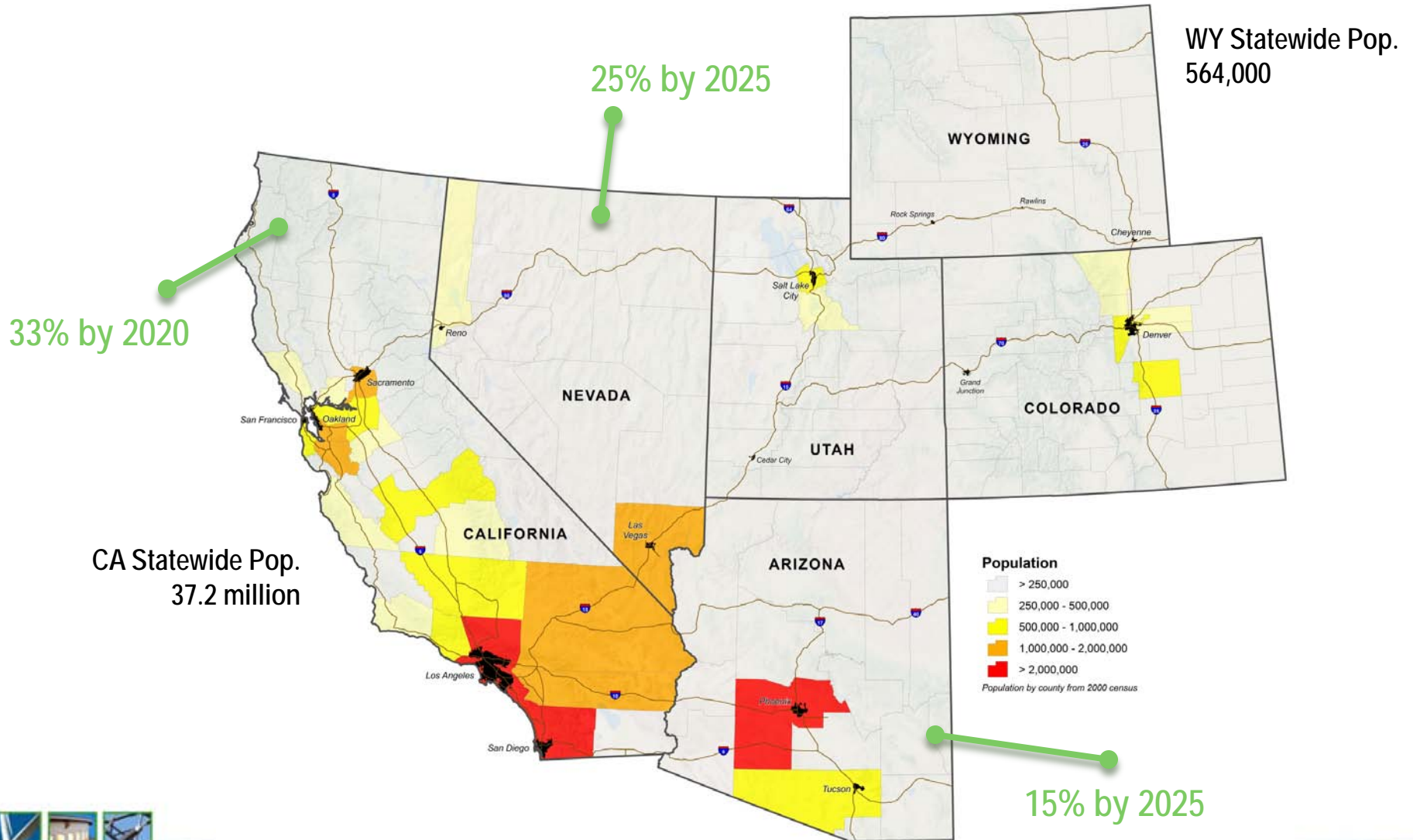
Wind Data Resolution: 2.5 km
Coordinate System: N. America Lambert Conformal Conic
Datum: NAD83
Date: June 2008

Disclaimer

This map depicts the approximate annual average wind speed over a 2.5-kilometer (1.6-mile) wide grid square at the indicated height above ground. It was created by AWS Truewind using its advanced atmospheric models and historical weather data and derived from AWS Truewind's high-resolution 200 m NeoMap® product. The map is intended to provide a general indication of the wind resource over large areas, and should not be used to design wind projects or to estimate energy production. For further information on services that address wind project design and energy production, please visit the Services section of our website or contact us.

AWS Truewind
25 Years of Powerful Solutions™
463 New Karer Rd. Albany, New York 12205
518.213.0044 (toll) | 518.213.0045 (fax)
http://navigator.awstruewind.com | www.awstruewind.com

CA / NV / AZ Have RPS Goals and Most Energy Consumers in the West

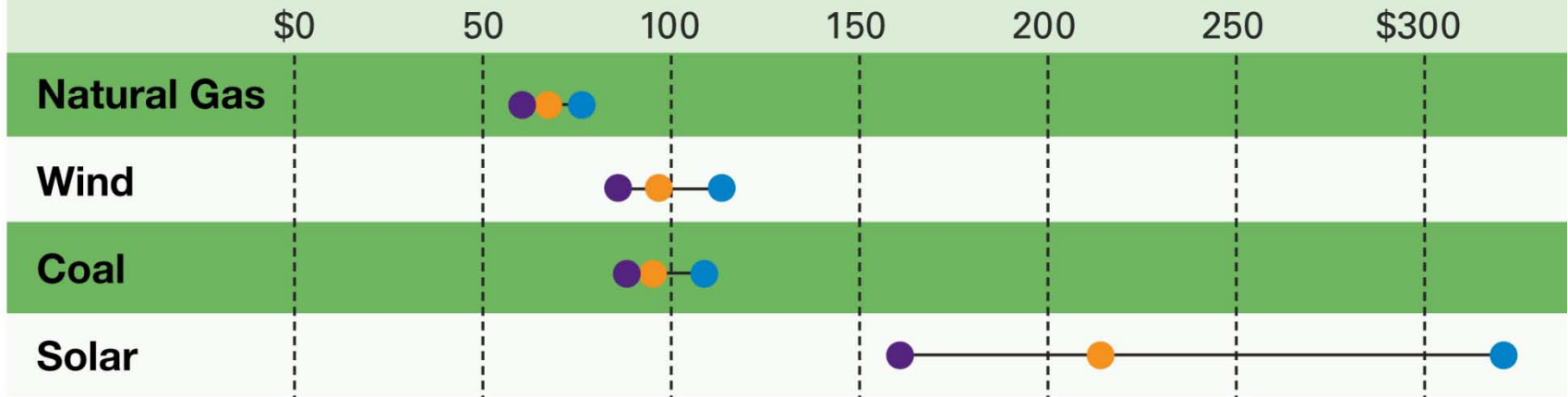


Wind is Cost-Effective Renewable Energy

Solar Is Most Expensive Energy Source

Wind and natural gas provide the most cost-effective clean energy supplies. Below is the average U.S. cost per megawatt-hour to produce electricity from a generation plant starting operations in 2016.

● Minimum cost ● Average cost ● Maximum cost



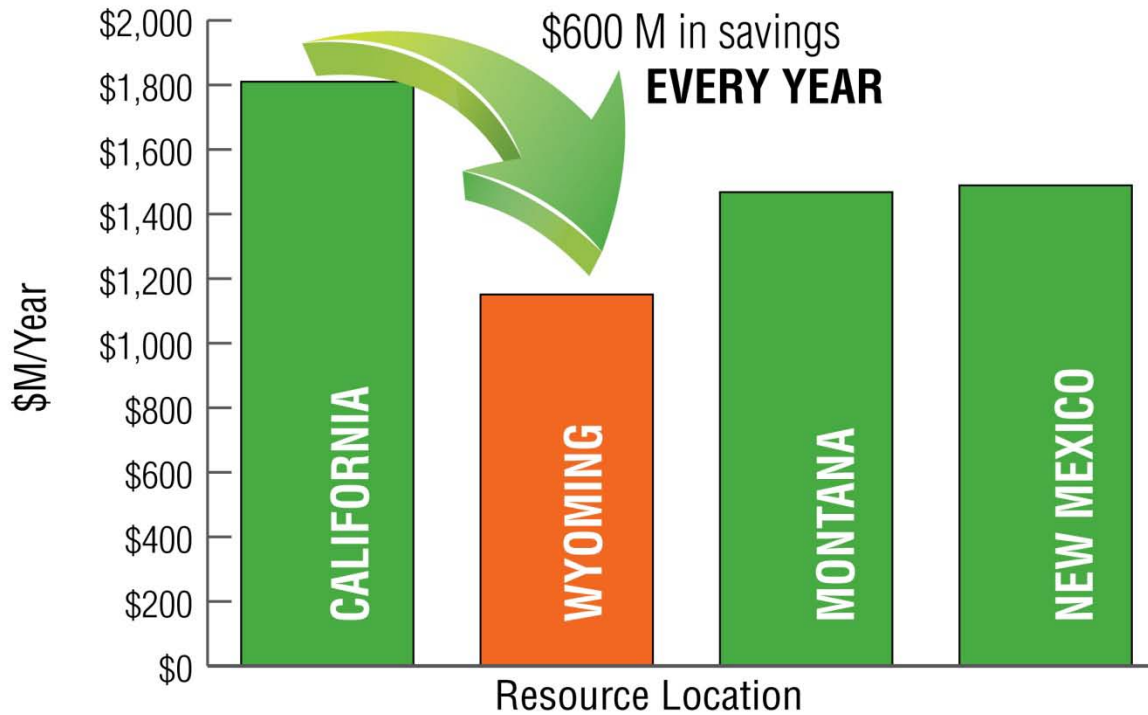
Notes: Figures are for conventional coal, conventional combined-cycle gas, onshore wind, and photovoltaic solar. Figures are levelized costs for building and running the plant, in 2009 dollars per megawatt-hour, excluding tax credits. Cost varies by region.
Source: U.S. Energy Information Administration



Cost Advantage of Wyoming Wind

Annual Cost Estimates for Delivering Approximately 3,000 MW of Renewable Energy to California by 2019

Source: WECC DRAFT 10-Year Regional Transmission Plan Summary, August 2011



TWE Project Benefits

- Creates thousands of direct and indirect jobs
- Provides millions of dollars of revenue in property taxes
- Enough electricity to serve 1.8+ million households
- Improves strength, reliability, capacity of U.S. electrical grid
- Supports federal goals to use designated energy corridors and develop more renewable energy facilities on federal land
- Reduces GHG emissions - equivalent to taking 1.5 million cars off the roads or shutting down 1,062 MW of coal
- Significant contribution to meeting state RPS goals with cost-effective, renewable energy



Jobs and Economic Benefits

- Thousands of jobs estimated over 2-3 year construction period
 - Line: 675-1,050 direct jobs at construction peak
 - Both terminals: 360-500 direct jobs at construction peak
 - Total indirect jobs in the project area: 1,600 jobs
 - Total indirect jobs nationwide: 5,000-9,000 jobs
 - Total long-term operations: 35-70 jobs
- Local property tax revenue estimated in year one
 - Wyoming: \$2,319,259
 - Colorado: \$991,988
 - Utah: \$2,911,144
 - Nevada: \$3,564,220
 - Total: \$9,786,611



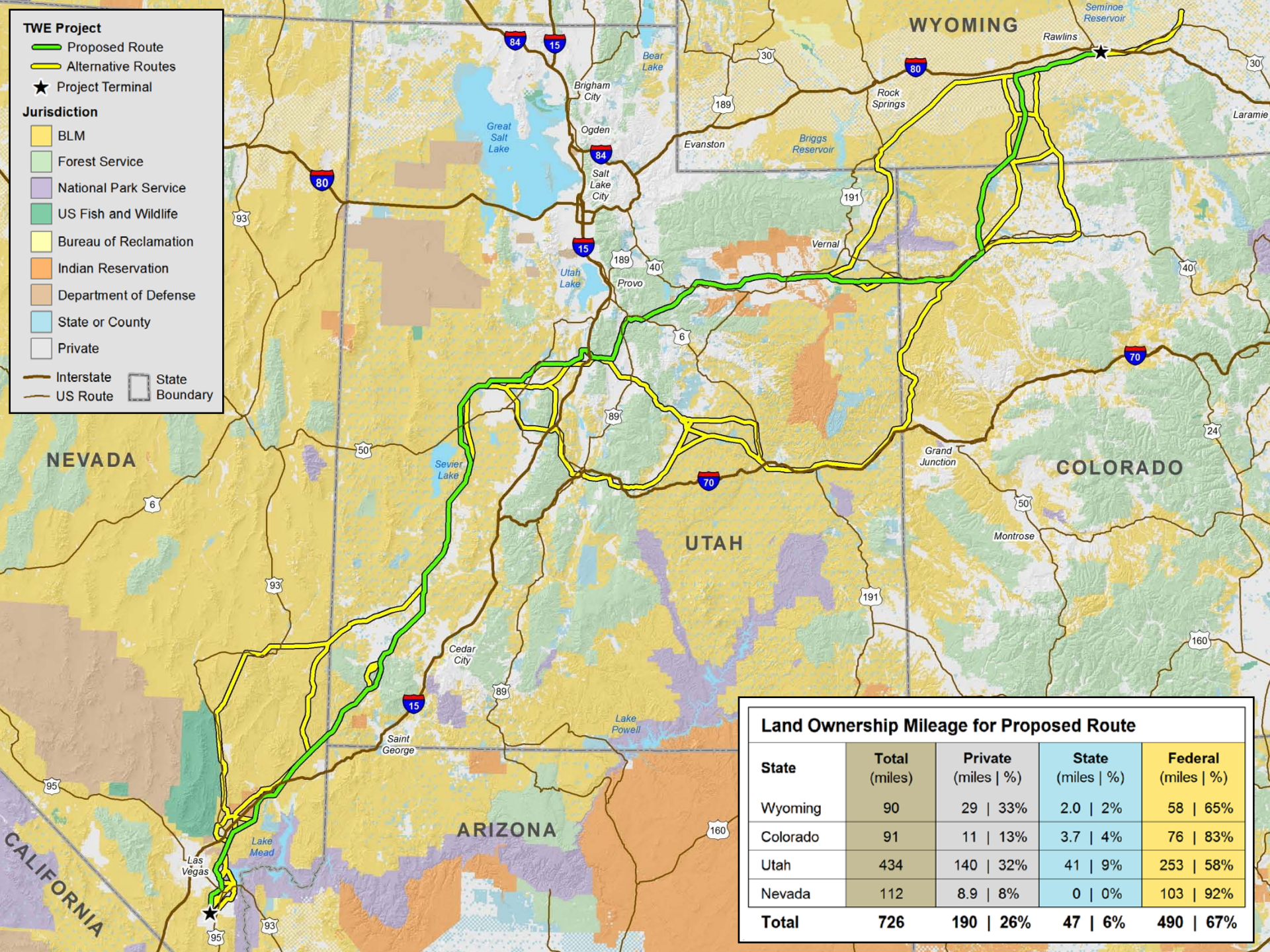
TWE Project

- Proposed Route
- Alternative Routes
- Project Terminal

Jurisdiction

- BLM
- Forest Service
- National Park Service
- US Fish and Wildlife
- Bureau of Reclamation
- Indian Reservation
- Department of Defense
- State or County
- Private

Interstate US Route State Boundary



Land Ownership Mileage for Proposed Route

State	Total (miles)	Private (miles %)	State (miles %)	Federal (miles %)
Wyoming	90	29 33%	2.0 2%	58 65%
Colorado	91	11 13%	3.7 4%	76 83%
Utah	434	140 32%	41 9%	253 58%
Nevada	112	8.9 8%	0 0%	103 92%
Total	726	190 26%	47 6%	490 67%

Primarily Sited on Federal Lands

Land Ownership Mileage		
Land Jurisdiction/ Ownership	Proposed Route (miles %)	Alternative Routes (miles %)
USDOJ - BLM	447 62%	846 57%
USDOJ - BOR	6 <1%	6 <1%
USDOJ - BIA/Tribal		14 1%
USDOJ - NPS		22 1%
USDA - National Forest	37 5%	74 5%
Department of Energy		3 <1%
State	46 6%	107 7%
Private	190 26%	407 28%

Federal Land Total

**Proposed
Route
490 miles
67%**

**Alternative
Routes
965 miles
65%**

Total

726

1479



NEPA Is A Marathon

■ Completed to Mile 13

- 2008: TWE filed ROW application with BLM
- 2010: Western became joint lead to prepare EIS
- 2011: Public scoping completed in 23 cities

■ Beyond Mile 13

- Preliminary Draft EIS anticipated Q1 2012
- Draft EIS anticipated Q3 2012
- Final EIS anticipated 2014

- Future milestones established prior to involvement of the Rapid Response Team for Transmission



Sprint to the Finish: Named as “Rapid Response” Project

- Obama Administration announced TWE Project is one of five western U.S. projects selected by new “Rapid Response Team for Transmission”
- RRTT intended to streamline NEPA process by creating joint agency team to be accountable for increased coordination and cooperation between agencies.
- Team completed project site visits in January 2012 in all four states where TWE Project is proposed



TWE Project Cooperating Agencies

7 Federal Agencies
USFS: U.S. Forest Service Intermountain Region, Ogden
USFWS: U.S. Fish and Wildlife Service representing:
- Mountain Prairie Region, Lakewood
- Pacific Southwest Region, Sacramento
NPS: U.S. National Park Service
- Lake Mead National Recreation Area
USACE: U.S. Army Corps of Engineers
- South Pacific Division
- Northwestern Division
DOD: U.S. Navy Region Southwest, San Diego
BOR: Bureau of Reclamation, Lower Colorado Region
BIA: Bureau of Indian Affairs Western Region, representing:
- Rocky Mountain Region, Billings
- Southwest Region, Albuquerque
3 Tribes
Paiute Indian Tribe of Utah, Moapa Band of Piute, Las Vegas Paiute Tribe

4 States
Wyoming Colorado
Utah Nevada
20 Counties
Wyoming: Carbon, Sweetwater
Colorado: Moffat, Mesa, Garfield, Rio Blanco
Utah: Beaver, Duchesne, Emery, Grand, Iron, Millard, Juab, Piute, Sevier, Uintah, Wasatch, Washington
Nevada: Clark, Lincoln
7 Others
Little Snake River Conservation District
Saratoga-Encampment-Rawlins Conservation District
Medicine Bow Conservation District
Sweetwater County Conservation District
Douglas Creek Conservation District
White River Conservation District
N-4 State Grazing Board



Federal Statutory Requirements

National Environmental Policy Act	42 USC § 4321 et seq.
Council on Environmental Quality's NEPA regulations	40 CFR Parts 1500-1508
Federal Land Policy and Management Act of 1976	43 USC 1701 et seq.
Wild and Scenic Rivers Act of 1968	16 USC 1271 et seq.
Farmland Protection and Policy Act of 1994	7 USC 4201 et seq.
Soil and Water Conservation Act of 1977	16 USC 2001 et seq.
Structures Interfering with Air Commerce Act	49 USC 44718
Objects Affecting Navigable Airspace	14 CFR 77
Federal Aviation Administration, March 1, 2000	Advisory Circular 70/7460-2K
Clean Water Act of 1977	33 USC 1344
Rivers and Harbors Act of 1899	33 USC 401 et seq.
Floodplain Management, May 21, 1977	EO 11988
Protection of Wetlands, May 24, 1977	EO 11990
Safe Drinking Water Act of 1974	42 USC 300(f) et seq.
Safe Drinking Water Act, Protection of Underground Sources of Drinking Water	42 USC 300h-7
Indian Sacred Sites, May 24, 1996	EO 13007
Consultation and Coordination with Indian Tribal Governments, Nov. 9, 2000	EO 13175
Native American Graves Protection and Repatriation Act of 1990	25 USC 3001
American Indian Religious Freedom Act of 1978	42 USC 1996
Archeological Resources Protection Act of 1979	16 USC 470(aa) et seq.
Archaeological and Historic Preservation Act of 1974	16 USC 469a et seq.
Antiquities Act of 1906	16 USC 431 et seq.
National Historic Preservation Act of 1966	16 USC 470 et seq.

Protection and Enhancement of the Cultural Environment, May 15, 1971	EO 11593
<i>Bald and Golden Eagle Protection Act of 1940</i>	16 USC 668
<i>Migratory Bird Treaty Act 1918</i>	16 USC § 703
<i>Endangered Species Act of 1973</i>	16 USC 1531 et seq.
Wild Free-Roaming Horse and Burro Act of 1971	Public Law 92-195
Invasive Species, February 3, 1999	EO 13112
Responsibilities of Federal Agencies to Protect Migratory Birds, February 10, 2001	EO 13186
Clean Air Act of 1970	42 USC 7401 et seq.
Noise Control Act of 1972, as amended by the Quiet Communities Act of 2005	42 USC 4901 et seq.
Hazardous Materials Transportation Law	49 USC 5101-5127
Emergency Planning and Community Right-to-Know Act of 1986, as extended to federal facilities, August 3, 1993	EO 12856
Oil Pollution Control Act of 1990	33 USC 2701 et seq.
Pollution Prevention Act of 1990	42 USC 13101 et seq.
Federal Insecticide, Fungicide and Rodenticide Act of 1947	7 USC 136 et seq.
Noxious Weed Act of 1974, as amended by Section 15, Management of Undesirable Plants on Federal Lands 1990	7 USC 2801-2813
Toxic Substances Control Act of 1976	15 USC 2605(e)
Solid Waste Disposal Act of 1976, as amended by the Resource Conservation and Recovery Act of 1976 and the Hazardous Solid Waste Amendments of 1984	42 USC 6901 et seq.

Regulatory requirements generally applicable *only* to projects with a "federal nexus" (e.g., constructed on public lands and therefore subject to NEPA) are noted in bold. Regulatory requirements that are also applicable to private land development, but have heightened significance on public lands are noted in bold and italics.



How To Contact Us

TransWest Express LLC
555 Seventeenth Street, Suite 2400
Denver, CO 80202
303.298.1000
www.transwestexpress.net

