

A note to generation developers...

As a generation developer, your mission is to build and operate facilities that produce power that meet the needs of the marketplace. Ultimately, your success is driven by three key factors:

Energy: You need a steady supply of quality energy resources that will fuel your power generation facility. Wyoming is blessed with an abundant variety of reliable resources that can back-up those long term power-purchase agreements.

Delivery: You need transmission infrastructure with the requisite capacity for your generation facility with such transmission built to those markets which provide both value and solutions to stakeholders.

Customers: You need customers who want to purchase your power and the WIA stands ready to assist you in such endeavor in many ways including forums, studies and other advocacy related activities. In addition, the WIA has active outreach efforts designed to assure that potential markets are fully appraised of both the quality and extent of Wyoming resources. Studies have shown that Wyoming wind, when combined with wind resources nearer the load centers, produce significant benefits via geographical diversity which mitigates ramping events relative to renewable energy on the grid.

To learn more about the WIA; the transmission projects under development; and our other initiatives/activities visit our site at www.wyia.org

Who we are:

Board of Directors

Mike Easley (Chairman): CEO of Powder River Energy Corporation in Sundance, WY

Kyle White (Vice-Chairman): Vice President of Regulatory and Governmental Affairs for Black Hills Corporation in Rapid City, SD

Bryce Freeman (Treasurer): Director of the Wyoming Office of Consumer Advocate in Cheyenne, WY

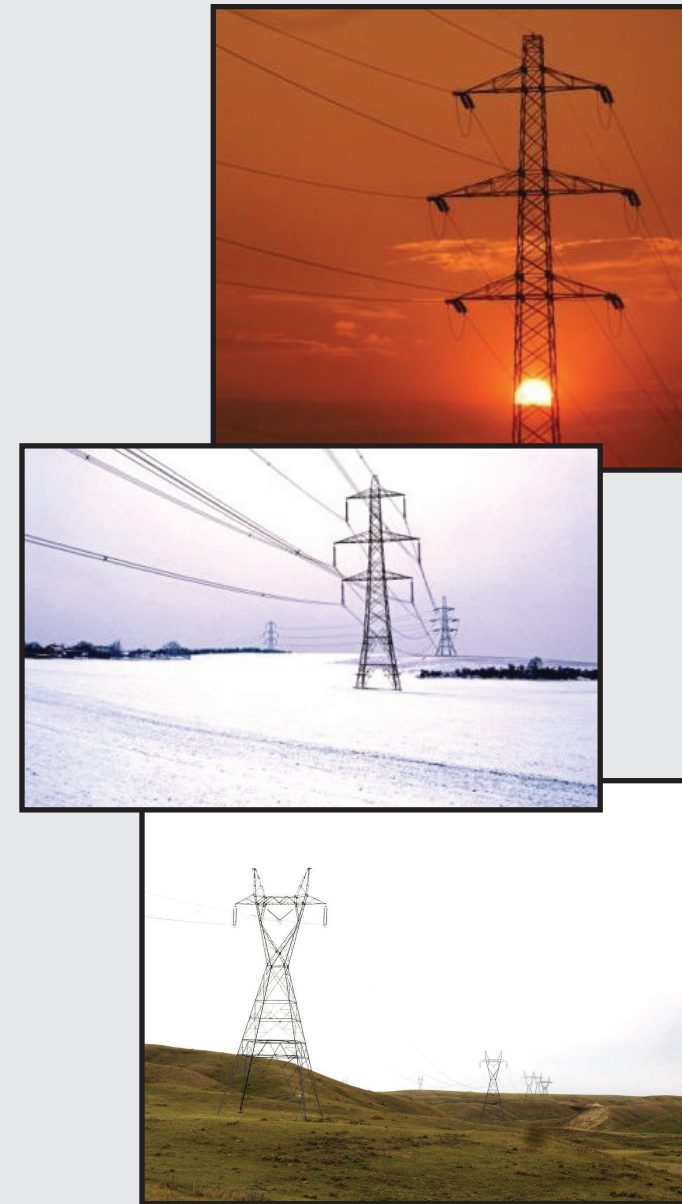
J.M. Shafer: Professional Engineer in Windsor, CO

Bret Jones: Sr. V.P., George K. Baum & Company in Cheyenne, WY

WIA Staff

Loyd G. Drain: Executive Director

Holly Martinez: Administrative Manager



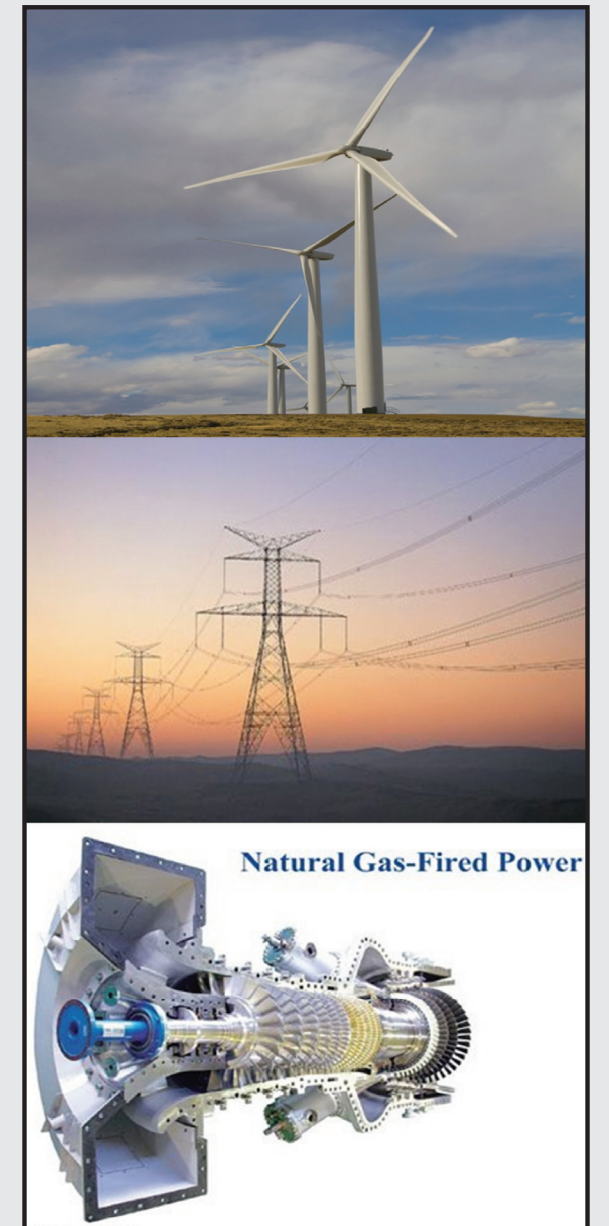
For more information, contact:
Wyoming Infrastructure Authority
200 E. 17th Street
Cheyenne, WY 82001

Phone: 307-635-3573
Fax: 307-635-5336
Email: IA-info@wyo.gov
Visit our website at www.wyia.org

Updated on April 15, 2011



Where Power Transmission & Generation Meet



Natural Gas-Fired Power



WYOMING INFRASTRUCTURE AUTHORITY

We're promoting new transmission to deliver Wyoming's abundant resources to the marketplace

Given our vast resources, we're the Energy Gateway to the West

Wyoming Infrastructure Authority (WIA):

The WIA was created in 2004 by the State Legislature and is tasked with expanding the Wyoming economy through improvements in the State's electric transmission infrastructure; and facilitating the consumption of Wyoming energy for transmission. We are responsible for promoting the planning, development and financing of transmission facilities in the State including associated generation. In addition, we have \$1 Billion in bonding authority relative to transmission infrastructure in the State including the collector lines between the generation facility and the transmission grid.

Targeted Markets:

Current demand for renewables in California, the Desert Southwest and Colorado are potential markets for Wyoming's quality, abundant wind resources as well as natural gas-fired generation to address the variability of wind. The WIA recognizes that every source of renewable energy has an associated cost and not all such energy is equally priced (quite the contrary). The WIA is confident that load serving entities in the marketplace and their regulators will seek to source renewable supplies that will have the least economic impact on the ultimate consumer, the residential and commercial rate payer. Given such scrutiny, studies have shown that power from Wyoming is cost-competitive compared to other renewable sources.

New Transmission:

Wyoming's Governor Matt Mead recently was quoted as saying "...no appreciable new generation of any type will be built in our State without new transmission infrastructure, which is currently being planned by a number of good companies".

New transmission developed in a responsible manner with a service-life of 80 to 100 years is our goal as such could deliver Wyoming resources to the marketplace well into the future--no one knows, with any certainty, what the source of electrons flowing down the lines will be in the coming decades.

Where Power Transmission & Generation Meet

Currently there are six (6) major transmission projects under development which include:

TransWest Express: A new 600 kV DC transmission line that currently offers the shortest route to connect Wyoming's abundant high-quality renewable energy supplies with population centers in the Desert Southwest

- Capacity: 3,000 MW
- Length: ~725 miles
- Developers: TransWest Express, LLC (an affiliate of The Anschutz Corp), and Western Area Power Administration (pending)
- In-service date: 2016
- Contact: David.Smith@tac-denver.com 303-299-1545
- Project Link: www.transwestexpress.net

Energy Gateway: Designed as new double-circuit and single-circuit 500 kV AC and some single-circuit 230-kV AC transmission lines between Wyoming and Idaho (Gateway West); and Wyoming and Utah (Gateway South)

- Capacity: a total of up to 4,500 MW—up to 3,000 MW for Gateway West & 1,500 MW for Gateway South
- Length: part of a 2,000 mile system which includes Gateway West, Gateway South & Gateway Central
- Developers: PacifiCorp & Idaho Power for Gateway West and PacifiCorp for Gateway South
- In-service date: 2014 to 2019 depending on the segment
- Contact: 801-220-4221 or email ConstructionProjects@pacificorp.com
- Project Links: <http://www.pacificorp.com/tran/tp/eg.html>

Wyoming-Colorado Intertie: A new 345 kV AC transmission line between Wyoming and Colorado which will resolve a long-standing transmission constraint known in the industry as TOT 3 and deliver quality wind resources to the Front Range at a competitive price

- Capacity: 850 MW; Length: 180 miles
- Developers: LS Power Group, the WIA and Western Area Power Administration
- In-service date: as early as 2014
- Contact: Adam Gassaway; 636-534-3214 (AGassaway@LSPower.com)
- Project Links: www.wcintertie.com; and <http://wyia.org/projects>

High Plains Express: A new 500 kV double-circuit AC transmission line between Wyoming and Arizona with on-ramps & off-ramps in Colorado and New Mexico

- Capacity: 3,500 MW
- Length: over 1,200 miles
- Developers: The WIA & 11 other parties
- In-service date: 2018-2019
- Contact: Jim.Pratt@srpnet.com 602-236-5385
- Link: www.rmao.com/wtpp/HPX_Studies.html

Zephyr: A new 500 kV HVDC transmission line between Wyoming and Nevada via Idaho

- Capacity: 3,000 MW
- Length: 1,000+ miles
- Developer: TransCanada
- In-service date: as early as 2017
- Contact: John_Dunn@transcanada.com 403-920-5566
- Project Link: www.transcanada.com/company/zephyr_chinook.html

Overland Transmission: A new 500 kV DC transmission line between Wyoming and Idaho to connect with LS Powers' SWIP line

- Capacity: up to 3,000 MW
- Length: 500+ miles
- Developer: Jade Energy Associates, LLC. an affiliate of LS Power Group
- In-service date: as early as 2017
- Contact: Mark Milburn (mmilburn@lspower.com) 636-532-2200
- Link: www.lspower.com/projects.htm

For questions on any of these projects, the contact information is listed in each of the summaries above

