

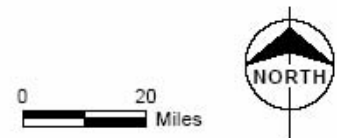
Legend

- Study Area
- Existing Transmission Lines
- Lines Currently Under Construction (Approximate Location)
- Wind Power Class**
- Excellent
- Outstanding
- Superb
- Constraints**
- Airport / Heliport
- Church
- Cemetery
- School
- Park
- Mine
- Oilfield
- Well
- Municipal Areas
- Federal Lands
- Conservation/Wildlife Areas
- State Lands/Trust Lands
- State Parks

Transmission Connection Points

Conceptual Path (not actual route)

Wind Farm (MW)





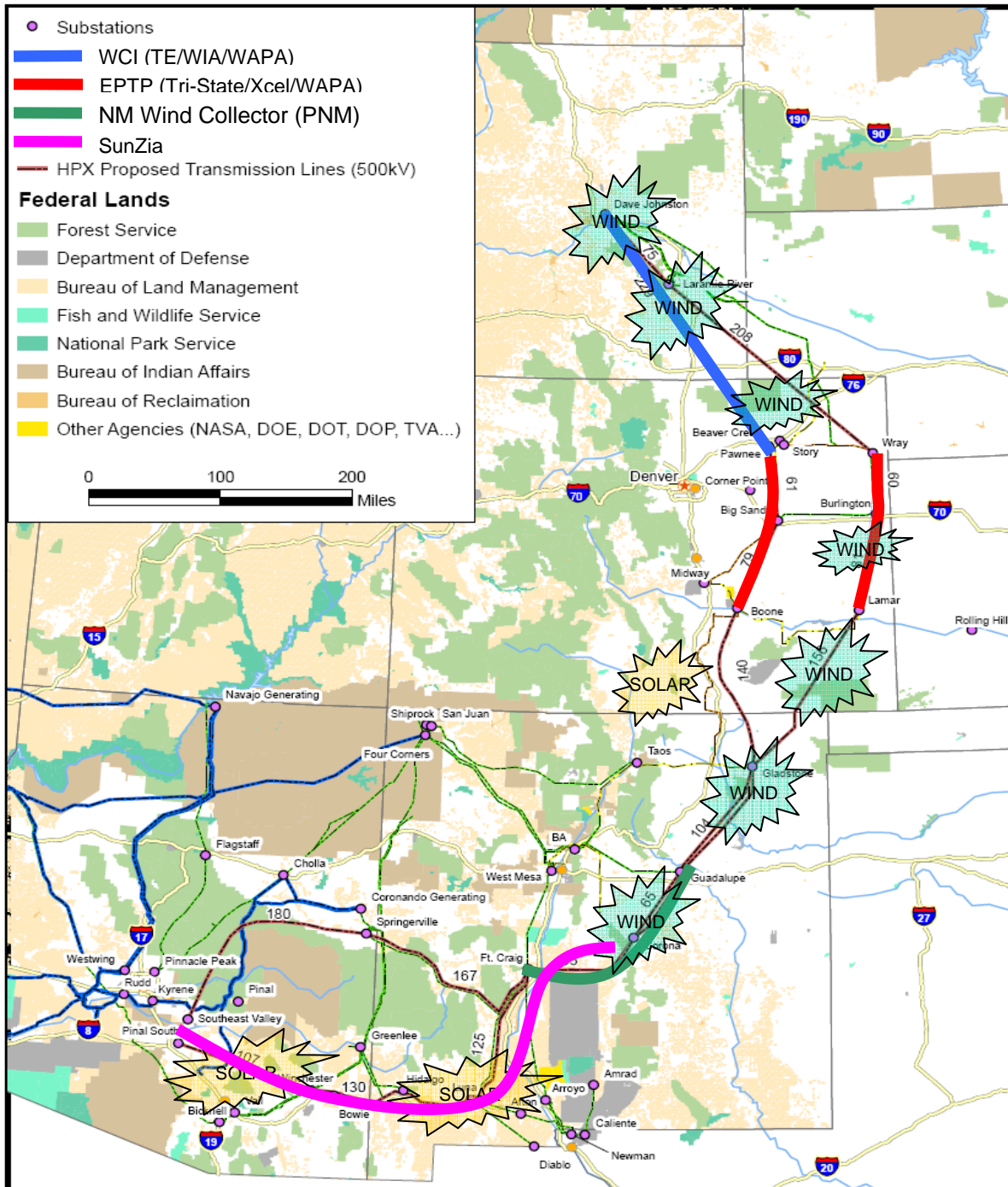
***A roadmap for transmission development
to benefit consumers in Wyoming, Colorado,
New Mexico, and Arizona***

**Jerry Vaninetti, Co-Manager of HPX
Vice President of Western Development, Trans-Elect**

***Seven State Infrastructure Authorities Meeting
January 22, 2009 – Denver, CO***

High Plains Express Initiative

A Roadmap for Regional Transmission Expansion



Description

- Two Corridors
 - Exact Routes TBD
- ~3,500 MW Capacity
- ~\$5 Billion
- Component Projects

Benefits

- Renewable development
- Enhanced reliability
- Consumer savings

Participants

- 7 Utilities
- 3 State Authorities
- 1 Transmission Developer

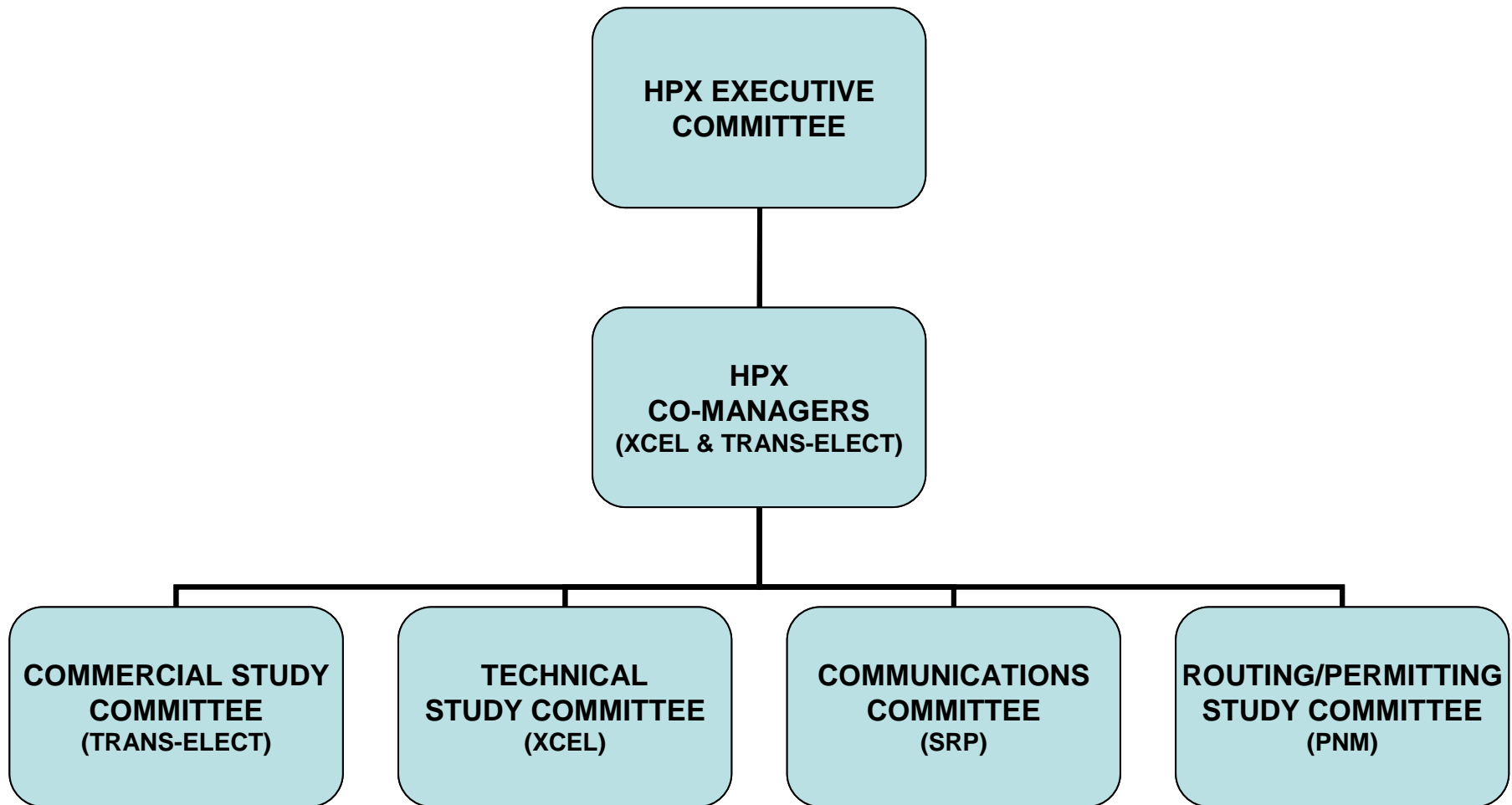
HPX Initiative Participants



A Touchstone Energy[®] Cooperative 



HPX Organization



Stage 2 HPX Feasibility

- Detailed studies conducted by independent parties
- Stakeholder Meeting in early March 09
- 2x345 kV & 500 kV scenarios
- Quantify the benefits to each HPX state
- Role of the component projects
- Feasibility completion date early 2010
- Wild Card: new legislative agendas for renewables and transmission